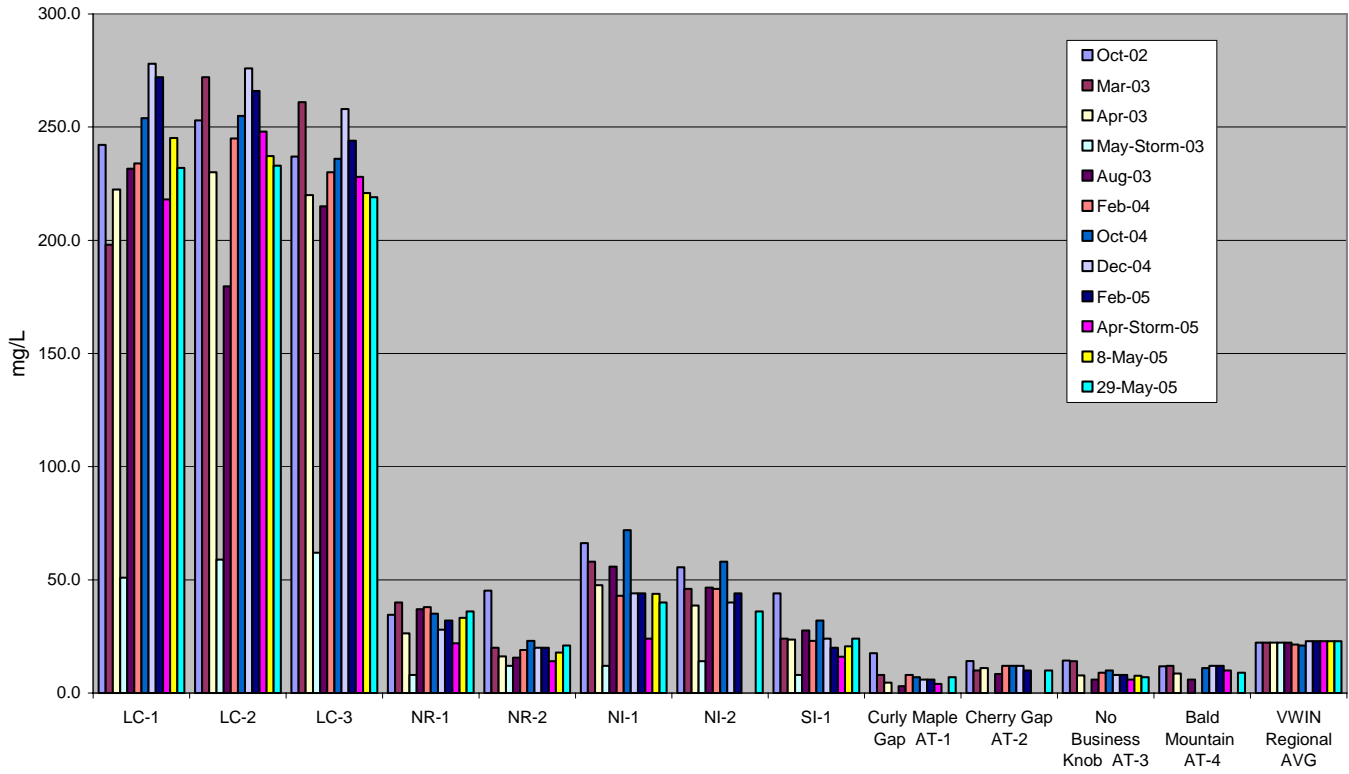


UNWA Water Chemistry Monitoring Results: Alkalinity Fall 2002 - Spring 2005

Lab Analysis Performed in Collaboration with University of North Carolina - Volunteer Water Information Network



Alkalinity (mg/L)												
Data Station	Oct-02	Mar-03	Apr-03	May-Storm-03	Aug-03	Feb-04	Oct-04	Dec-04	Feb-05	Apr-Storm-05	8-May-05	29-May-05
LC-1	242.2	198.0	222.4	51.0	231.6	234.0	254.0	278.0	272.0	218.0	245.2	232.0
LC-2	253.0	272.0	230.0	59.0	179.6	245.0	255.0	276.0	266.0	248.0	237.2	233.0
LC-3	237.0	261.0	220.0	62.0	215.0	230.0	236.0	258.0	244.0	228.0	220.8	219.0
NR-1	34.6	40.0	26.4	8.0	37.0	38.0	35.0	28.0	32.0	22.0	33.2	36.0
NR-2	45.2	20.0	16.2	12.0	15.6	19.0	23.0	20.0	20.0	14.0	17.8	21.0
NI-1	66.2	58.0	47.6	12.0	55.8	43.0	72.0	44.0	44.0	24.0	43.8	40.0
NI-2	55.6	46.0	38.6	14.0	46.6	46.0	58.0	40.0	44.0			36.0
SI-1	44.0	24.0	23.6	8.0	27.6	23.0	32.0	24.0	20.0	16.0	20.7	24.0
Curly Maple Gap AT-1	17.6	8.0	4.6		3.0	8.0	7.0	6.0	6.0	4.0		7.0
Cherry Gap AT-2	14.2	10.0	11.0		8.4	12.0	12.0	12.0	10.0			10.0
No Business Knob AT-3	14.4	14.0	7.8		6.0	9.0	10.0	8.0	8.0	6.0	7.6	7.0
Bald Mountain AT-4	11.8	12.0	8.6		6.0		11.0	12.0	12.0	10.0		9.0
VWIN Regional AVG	22.2	22.2	22.2	22.2	22.2	21.4	21.0	22.9	22.9	22.9	22.9	22.9